

# The Native Bee Society of BC and BC Parks

## Bumble Bee BINGO

**Hunt's Bumble Bee**



**Half-black BB**



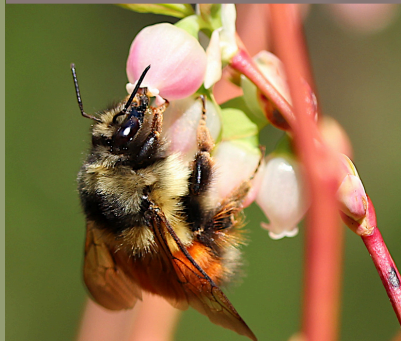
**Red-belted BB**



**Fuzzy-horned BB**



**Orange-rumped BB**



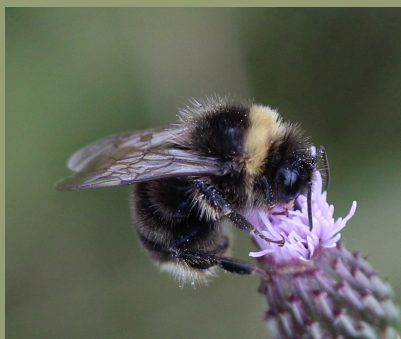
**Central Bumble Bee**



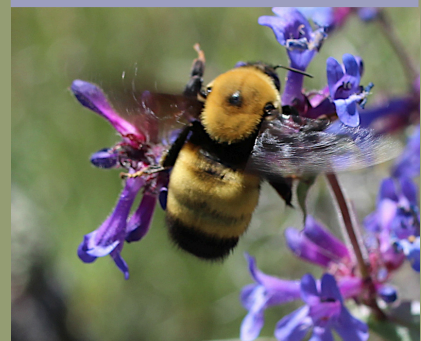
**Nearctic Bumble Bee**



**Western Bumble Bee**



**Nevada Bumble Bee**



Take a walk in the park and look for beautiful bumble bees



For more information see our websites:  
[bcnativebees.org](http://bcnativebees.org)  
[bcparks.ca](http://bcparks.ca)

# How to BEE BINGO: A guide to using the NBSBC and BC Parks Bee BINGO Cards

We are so lucky to have over 500 native bee species in British Columbia, including 35-36 species of bumble bees and we need bee spotters to take photos of BC bees in parks and post them on iNaturalist. Your photos will automatically be added to our NBSBC Bee Spotter Project that tracks all bee sightings in the province and will help with our research. This summer we are excited about our pilot project to focus on bee sightings in three BC Provincial Parks: Kokanee Creek, E. C. Manning and Blanket Creek. These BINGO cards will help you identify some of the bumble bees that you might see in these Parks and the Southern Interior of BC. We have created iNat projects that focus on each Park from June 1 to August 31, 2024. We've also created some cards to help you identify the plants you may see bees foraging on for nectar and pollen. It helps our research if you note the plant you see each bee foraging on if you can. You can even make an observation of the plant itself and copy and paste the link onto your observation notes.

We'd particularly like you to keep an eye out for a threatened species of bumble bee, the western bumble bee (*Bombus occidentalis*). Western bumble bees are compact, short-tongued bumble bees with black and yellow stripes and a tan or white tail. Western bumble bees have a historical range from the Pacific Coast to the Rocky Mountains, but their range is shrinking.

We will be handing out hard copies of the BINGO cards at our three BINGO bee-o-blitzes. We are leading bee walks and helping folks spot and photograph native bees in the three BC Parks. Everyone is welcome! If you can't join us on those days, you are welcome to print out the cards yourselves and use them. Look for them on our website: [bcnativebees.org](http://bcnativebees.org). Let's go play BEE BINGO!

Save the dates! Bee Walks and Talks in 3 BC Parks: Keep an eye on our events page for details on where to meet.

Sunday, June 16: Kokanee Creek Park

Sunday, July 28: E. C. Manning Park

Sunday, August 4: Blanket Creek Park

Bumble Bee Checklist:

Brown-belted Bumble Bee (*Bombus griseocollis*)

California Bumble Bee (*Bombus californicus*)

Central Bumble Bee (*Bombus centralis*)

Fuzzy-horned Bumble Bee (*Bombus mixtus*)

Golden Northern Bumble Bee (*Bombus fervidus*)

Half-black Bumble Bee (*Bombus vagans*)

Hunt's Bumble Bee (*Bombus huntii*)

Nearctic Bumble Bee (*Bombus vancouverensis nearcticus*)

Nevada Bumble Bee (*Bombus nevadensis*)

Orange-rumped Bumble Bee (*Bombus melanopygus*)

Red-belted Bumble Bee (*Bombus rufocinctus*)

Western Bumble Bee (*Bombus occidentalis*)

Yellow-fronted Bumble Bee (*Bombus flavifrons*)

Cuckoo Bumble Bee: Indiscriminate Bumble Bee (*Bombus insularis*)