

Bumble Bees of Coastal BC

ORANGE BANDED/BOTTOMED



Vancouver

B. vancouverensis



Black-tailed

B. melanopygus



Yellow head*

*B. flavifrons**



Fuzzy-horned

B. mixtus



Sitka

B. sitkensis

INTRODUCED



Common eastern

B. impatiens

YELLOW



Nevada**

*B. nevadensis***



Yellow head*

*B. flavifrons**

YELLOW-BANDED



Red-belted*

*B. rufocinctus**



Yellow-faced±

B. vosnesenskii±



Yellow

B. fervidus



Indiscriminate cuckoo**

*B. insularis***



Fernald cuckoo**

*B. flavidus***

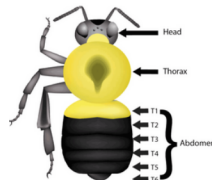
WHITE-BOTTOMED



Western

B. occidentalis

Bee Morphology



Species in decline

- * Highly variable species. Not all patterns shown.
- ** Species is locally rare
- ± Range and colour pattern overlap with *Bombus caliginosus*.

wildlifepreservation.ca
pollinators@wildlifepreservation.ca



Females & Males

Male bumble bees emerge later in the season and have some of the following physical characteristics.

FEMALE



MALE



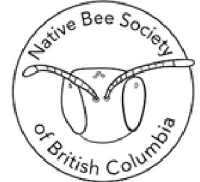
Males have:

1. Extra abdominal segment
2. Extra antenna segment
3. Thinner legs with no pollen baskets
4. Often longer/ shaggier hair

Males are difficult to identify to species by colour compared to females.



Special thanks to:



www.bcnativebees.org

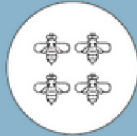
Submit your Sightings to BumbleBeeWatch.org



Take a photo of a bumble bee



Log in and upload your photo(s)



Identify the bee species



Sighting will be verified by an expert

This is for quick reference for identifying the most common and declining bumble bee species in Coastal British Columbia. Only common colour pattern(s) for queens of each species is provided. If you encounter a different colour pattern or caste, please refer to a more comprehensive resource.

Bumble bee illustrations: Paul Williams (identification and colour patterns) and Elaine Evans, Rich Hatfield (bee body design)