

# Bumble Bees of Interior BC

## ORANGE-BANDED



Hunt's  
*B. huntii*



Black-tailed  
*B. melanopygus*



Red-belted\*  
*B. rufocinctus\**

## ORANGE BOTTOMED



Yellow head\*  
*B. flavifrons\**



Central  
*B. centralis*



Fuzzy-horned  
*B. mixtus*



High country\*\*  
*B. kirbiellus\*\**

## YELLOW BANDED



Vancouver  
*B. vancouverensis*



Suckley cuckoo  
*B. suckleyi*



Red-belted\*  
*B. rufocinctus\**

## YELLOW



Nevada  
*B. nevadensis*



Yellow head\*  
*B. flavifrons\**



Half-black  
*B. vagans*



White-shouldered  
*B. appositus*

## WHITE BOTTOMED

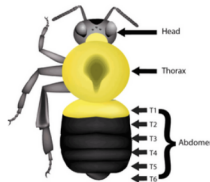


Western  
*B. occidentalis*



Ashton cuckoo  
*B. bohemicus*

## Bee Morphology



### Species in decline

\*Highly variable species. Not all patterns shown.

\*\* Species is locally rare

wildlifepreservation.ca  
pollinators@wildlifepreservation.ca



# Females & Males

Male bumble bees emerge later in the season and have some of the following physical characteristics.

**FEMALE**



**MALE**



Males are difficult to identify to species by colour compared to females.

**Males have:**

1. Extra abdominal segment
2. Extra antenna segment
3. Thinner legs with no pollen baskets
4. Often longer/ shaggier hair



Special thanks to:



[www.bcnativebees.org](http://www.bcnativebees.org)

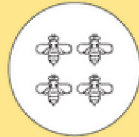
## Submit your Sightings to [BumbleBeeWatch.org](http://BumbleBeeWatch.org)



Take a photo of a bumble bee



Log in and upload your photo(s)



Identify the bee species



Sighting will be verified by an expert

*This is for quick reference for identifying the most common and declining bumble bee species in interior British Columbia. Only common colour pattern(s) for queens of each species is provided. If you encounter a different colour pattern or caste, please refer to a more comprehensive resource.*

*Bumble bee illustrations: Paul Williams (identification and colour patterns) and Elaine Evans, Rich Hatfield (bee body design)*